



**CARTER**REMY  
ESTATES



# Ashley Gardens, Grays, RM16

From £475,000

3 2 1





Guide Price £480,000 - £535,000 Introducing a remarkable opportunity! We proudly present this expansive 3 double family bungalow, boasting immense potential for extension into the loft, transforming it into an extraordinary chalet bungalow.

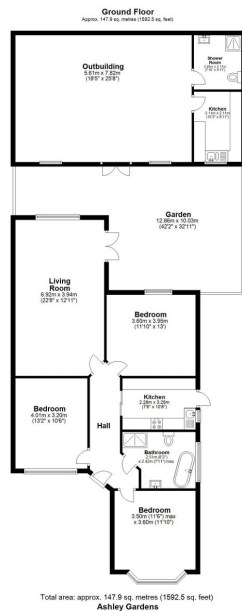
Prepare to be captivated by the generous living space within, complemented by a spacious driveway allowing for convenient parking of up to 3 cars. An adjacent side entrance leads to an incredible outbuilding, functioning as a self-contained family annex. This annex features its own heating system, a well-appointed shower room, and a fully equipped kitchen, all completed to the highest standards.

Nestled in the highly sought-after locale of North Grays, this exceptional property is an absolute steal for the growing family. A magnificent purchase awaits the fortunate next owner, promising endless years of happiness and contentment.

Don't miss out on this outstanding chance! Act now and call us today to arrange your exclusive viewing and secure your slice of paradise.







- Spacious and impressive 3 double family bungalow
- Ample living space and a driveway for up to 3 cars
- . Annex includes its own heating, shower room, and fully functional kitchen
- perfect home for a growing family seeking additional space
- An exceptional buy with great potential for future enhancements
- Potential to extend into the loft for a stunning chalet bungalow
- . Impressive outbuilding serving as a self-contained family annex
- Finished to a high standard, ensuring comfort and quality.
- Located in the highly sought-after area of North Grays
- £480,000-£535,000

